

Discharge Measurement Summary

Site name W-canal
Site number 01
Operator(s) T.miller
File name WestCanal_20230330_1130.ft
Comment

Start time	3/30/2023 11:30 AM	Sensor type	Top Setting
End time	3/30/2023 12:24 PM	Handheld serial number	FT2H2219029
Start location latitude	42.810	Probe serial number	FT2P2219014
Start location longitude	-118.871	Probe firmware	1.30
Calculations engine	FlowTracker2	Handheld software	1.7

# Stations	Avg interval (s)	Total discharge (m³/s)
16	40	0.4334

Total width (m)	Total area (m²)	Wetted Perimeter (m)
4.572	2.15628	4.916

Mean SNR (dB)	Mean depth (m)	Mean velocity (m/s)
25	0.472	0.2010

Mean temp (°C)	Max depth (m)	Max velocity (m/s)
4.343	0.634	0.2778

Discharge Uncertainty		
Category	ISO	IVE
Accuracy	1.0%	1.0%
Depth	0.1%	1.9%
Velocity	0.3%	3.9%
Width	0.1%	0.1%
Method	1.2%	
# Stations	3.1%	
Overall	3.5%	4.4%

Discharge equation	Mid Section
Discharge uncertainty	IVE
Discharge reference	Rated

Data Collection Settings	
Salinity	0.000 PSS-78
Temperature	-
Sound speed	-
Mounting correction	0.000 %

Summary overview

No changes were made to this file
Quality control warnings

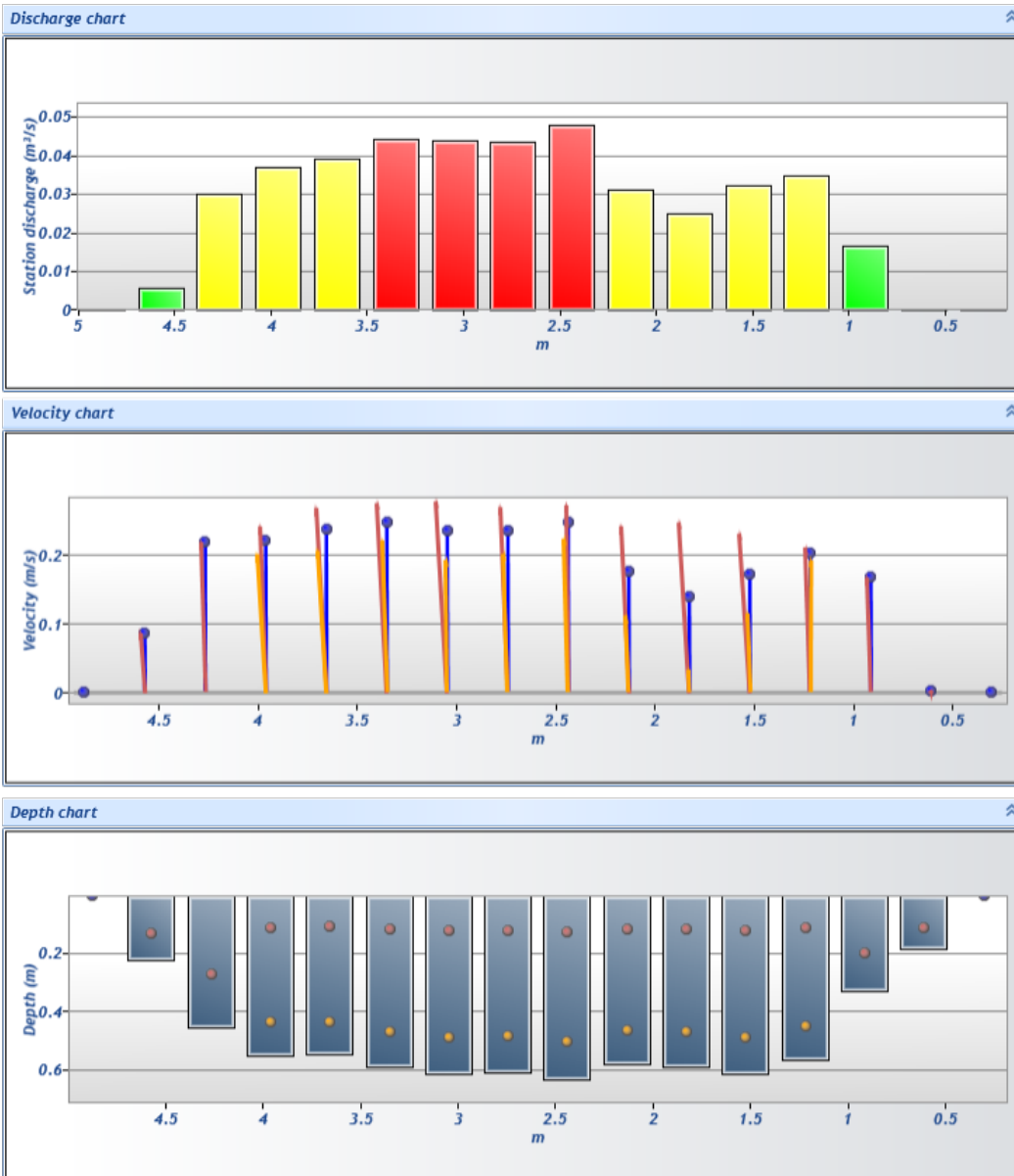


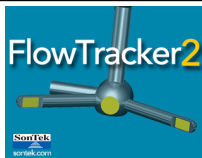
Discharge Measurement Summary

Site name W-canal
Site number 01
Operator(s) T.miller
File name WestCanal_20230330_1130.ft
Comment

Station Warning Settings

Station discharge OK	Station discharge < 5.00%
Station discharge caution	5.00% >= Station discharge < 10.00%
Station discharge warning	Station discharge >= 10.00%



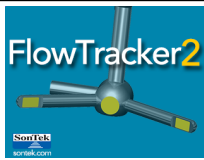


Discharge Measurement Summary

Site name W-canal
Site number 01
Operator(s) T.miller
File name WestCanal_20230330_1130.ft
Comment

Measurement results

St#	Time	Location (m)	Method	Depth (m)	%Depth	Measured Depth (m)	Samples	Velocity (m/s)	Correcti on	Mean Velocity (m/s)	Area (m ²)	Flow (m ³ /s)	%Q	
0	11:30 AM	0.305	None	0.000	0.0000	0.000	0	0.0000	1.0000	0.0033	0.00000	0.0000	0.00	✓
1	11:31 AM	0.610	0.6	0.183	0.6000	0.110	80	0.0033	1.0000	0.0033	0.05574	0.0002	0.04	✓
2	11:41 AM	0.914	0.6	0.329	0.6000	0.198	80	0.1672	1.0000	0.1672	0.10034	0.0168	3.87	✓
3	11:44 AM	1.219	0.2/0.8	0.567	0.2000	0.113	80	0.2112	1.0000	0.2019	0.17280	0.0349	8.05	✓
3	11:44 AM	1.219	0.2/0.8	0.567	0.8000	0.454	80	0.1926	1.0000	0.2019	0.17280	0.0349	8.05	✓
4	11:50 AM	1.524	0.2/0.8	0.613	0.2000	0.123	80	0.2311	1.0000	0.1727	0.18674	0.0323	7.44	✓
4	11:50 AM	1.524	0.2/0.8	0.613	0.8000	0.490	80	0.1144	1.0000	0.1727	0.18674	0.0323	7.44	✓
5	11:55 AM	1.829	0.2/0.8	0.588	0.2000	0.118	80	0.2472	1.0000	0.1400	0.17930	0.0251	5.79	✓
5	11:55 AM	1.829	0.2/0.8	0.588	0.8000	0.471	80	0.0327	1.0000	0.1400	0.17930	0.0251	5.79	✓
6	11:58 AM	2.134	0.2/0.8	0.582	0.2000	0.116	80	0.2419	1.0000	0.1767	0.17744	0.0314	7.23	✓
6	11:58 AM	2.134	0.2/0.8	0.582	0.8000	0.466	80	0.1114	1.0000	0.1767	0.17744	0.0314	7.23	✓
7	12:02 PM	2.438	0.2/0.8	0.634	0.2000	0.127	80	0.2724	1.0000	0.2481	0.19324	0.0479	11.06	✓
7	12:02 PM	2.438	0.2/0.8	0.634	0.8000	0.507	80	0.2237	1.0000	0.2481	0.19324	0.0479	11.06	✓
8	12:05 PM	2.743	0.2/0.8	0.610	0.2000	0.122	80	0.2696	1.0000	0.2357	0.18581	0.0438	10.11	✓
8	12:05 PM	2.743	0.2/0.8	0.610	0.8000	0.488	80	0.2019	1.0000	0.2357	0.18581	0.0438	10.11	✓
9	12:08 PM	3.048	0.2/0.8	0.613	0.2000	0.123	80	0.2778	1.0000	0.2352	0.18674	0.0439	10.14	✓
9	12:08 PM	3.048	0.2/0.8	0.613	0.8000	0.490	80	0.1927	1.0000	0.2352	0.18674	0.0439	10.14	✓
10	12:11 PM	3.353	0.2/0.8	0.588	0.2000	0.118	80	0.2753	1.0000	0.2483	0.17930	0.0445	10.27	✓
10	12:11 PM	3.353	0.2/0.8	0.588	0.8000	0.471	80	0.2214	1.0000	0.2483	0.17930	0.0445	10.27	✓
11	12:14 PM	3.658	0.2/0.8	0.546	0.2000	0.109	80	0.2686	1.0000	0.2373	0.16630	0.0395	9.11	✓
11	12:14 PM	3.658	0.2/0.8	0.546	0.8000	0.436	80	0.2059	1.0000	0.2373	0.16630	0.0395	9.11	✓
12	12:17 PM	3.962	0.2/0.8	0.549	0.2000	0.110	80	0.2416	1.0000	0.2215	0.16723	0.0370	8.55	✓
12	12:17 PM	3.962	0.2/0.8	0.549	0.8000	0.439	80	0.2013	1.0000	0.2215	0.16723	0.0370	8.55	✓
13	12:20 PM	4.267	0.6	0.454	0.6000	0.272	80	0.2187	1.0000	0.2187	0.13843	0.0303	6.98	✓
14	12:22 PM	4.572	0.6	0.219	0.6000	0.132	80	0.0875	1.0000	0.0875	0.06689	0.0059	1.35	✓
15	12:24 PM	4.877	None	0.000	0.0000	0.000	0	0.0000		0.0875	0.00000	0.0000	0.00	✓

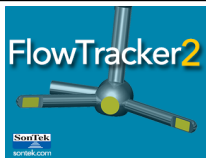


Discharge Measurement Summary

Site name W-canal
Site number 01
Operator(s) T.miller
File name WestCanal_20230330_1130.ft
Comment

Quality Control Settings	
Maximum depth change	50.00%
Maximum spacing change	100.00%
SNR threshold	10 dB
Standard error threshold	0.0100 m/s
Spike threshold	10.00%
Maximum velocity angle	20.0 deg
Maximum tilt angle	5.0 deg

Quality control warnings							
St#	Time	Location (m)	Method	Depth (m)	%Depth	Measured Depth (m)	Warnings
7	12:02 PM	2.438	0.2/0.8	0.634	0.2000	0.127	High Stn % Discharge
7	12:02 PM	2.438	0.2/0.8	0.634	0.8000	0.507	High Stn % Discharge
8	12:05 PM	2.743	0.2/0.8	0.610	0.2000	0.122	High Stn % Discharge
8	12:05 PM	2.743	0.2/0.8	0.610	0.8000	0.488	High Stn % Discharge
9	12:08 PM	3.048	0.2/0.8	0.613	0.2000	0.123	High Stn % Discharge
9	12:08 PM	3.048	0.2/0.8	0.613	0.8000	0.490	High Stn % Discharge
10	12:11 PM	3.353	0.2/0.8	0.588	0.2000	0.118	High Stn % Discharge
10	12:11 PM	3.353	0.2/0.8	0.588	0.8000	0.471	High Stn % Discharge
15	12:24 PM	4.877	None	0.000	0.0000	0.000	Water Depth > QC



Discharge Measurement Summary

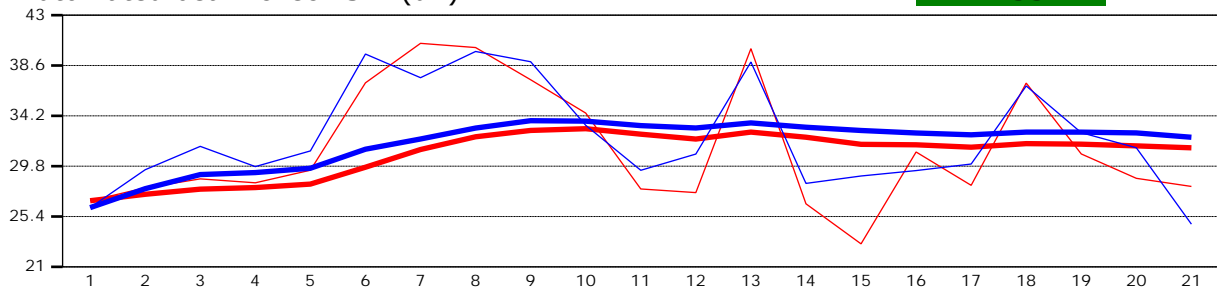
Site name W-canal
Site number 01
Operator(s) T.miller
File name WestCanal_20230330_1130.ft
Comment

Beam 1	
Beam 2	

Automated beam check Start time 3/30/2023 11:30:21 AM

Automated beam check SNR(dB)

PASS



Automated beam check Noise level(cnts)

PASS



Automated beam check Quality control warnings

No quality control warnings



Discharge Measurement Summary

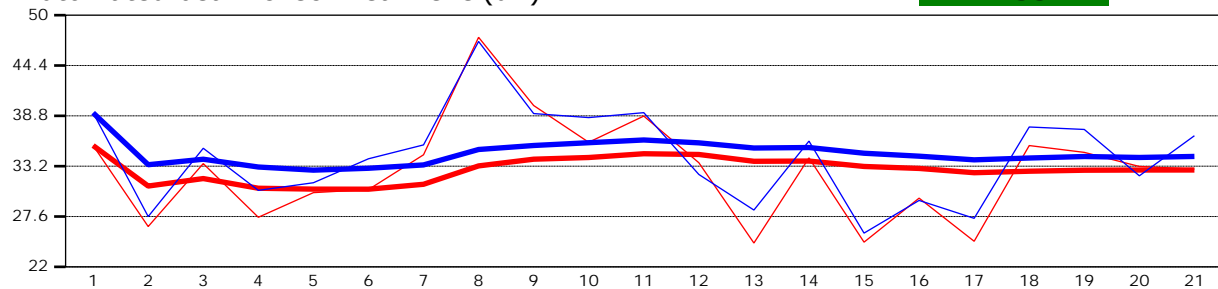
Site name W-canal
Site number 01
Operator(s) T.miller
File name WestCanal_20230330_1130.ft
Comment

Beam 1	
Beam 2	

Automated beam check Start time 3/30/2023 11:30:21 AM

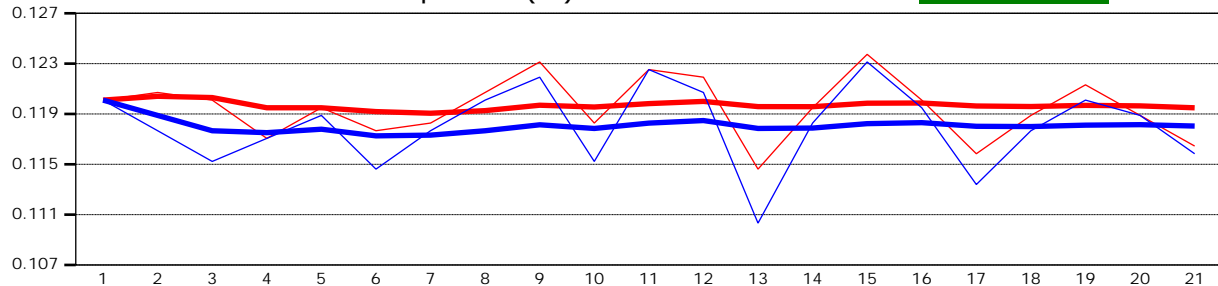
Automated beam check Peak level(dB)

PASS



Automated beam check Peak position(m)

PASS



Automated beam check Quality control warnings

No quality control warnings